



ABOVE AND BEYOND



*Proud to Support First Responders and
Those Serving in Defense of our Nation.*





BLACKHAWKcfs



BlackHawkcfs

The **BLACKHAWKcfs** is designed to meet the needs of variable demand fill operations. Its design, based on our continuous improvement philosophy, features a **two cylinder fill station** and at the heart of this system, **our field-proven, 6000 PSIG air compressor**.

With all of the **safety features** Eagle is known for, plus **carefully thought-out organization and ergonomics**, this integrated system easily meets the needs of most average-sized departments. The **BLACKHAWKcfs** includes features normally found on larger integrated systems.



Hinged, "knockdown" sub-panels for routine maintenance and adjustments

Model	CFM* (LPM)	HP	PSIG (BAR)	Weight Lbs. (kg)
BH05B	6.0 (170)	5.0	5000 (345)	2285 (1036.5)
BH08D	8.3 (235)	7.5	5000 (345)	2325 (1054.6)
BH08E	8.0 (227)	7.5	6000 (414)	2365 (1072.7)
BH10F	14.0 (396)	10.0	6000 (414)	2370 (1075.0)

DIMENSIONS: 66"H x 64"W x 41"D (max) (167.6 cm x 162.6 cm x 104.1 cm)

Weights do not include air storage cylinders

*Charging rate. Based on filling an 80 CF cylinder from ambient to the maximum working pressure shown



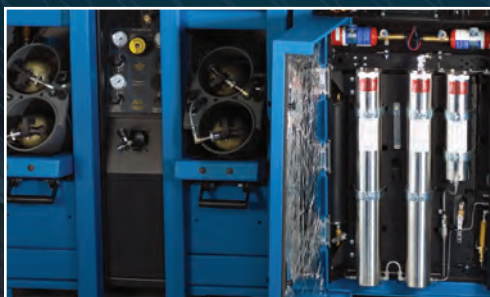


RAVENCFS

RAVENCFS

The **RAVENCFS** is our new revolutionary cylinder fill system. Its **high-end, technically advanced features** offer **maximum user efficiency and flexibility** with a **unique four cylinder fill capacity** speeding up the fill process.

Simplified maintenance, intuitive controls and a **noise-inhibiting cabinet** create an easy-to-use experience without sacrificing performance.



Model	CFM* (LPM)	HP	PSIG (BAR)	Weight Lbs. (kg)
RV08E	8.0 (227)	7.5	6000 (414)	3300 (1496.9)
RV10F	14.0 (396)	10.0	6000 (414)	3305 (1499.1)
RV15G	21.0 (595)	15.0	6000 (414)	3410 (1546.8)
RV20G	24.0 (680)	20.0	6000 (414)	3450 (1564.9)

DIMENSIONS: 71"H x 84"W x 41"D (max) (180.3 cm x 213.4 cm x 104.1 cm)

Weights do not include air storage cylinders

*Charging rate. Based on filling an 80 CF cylinder from ambient to the maximum working pressure shown





RAPTORBAC

TALONBAC

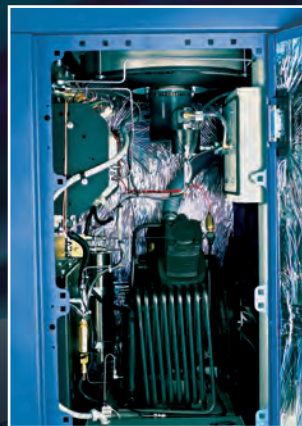


Breathing Air Compressors

The **Breathing Air Compressor (BAC)** product is our latest development and its design reflects our philosophy and proven track record of **technology driven product development** focusing on **operator safety, operational efficiency** and **user-friendly features**.

RaptorBAC

Careful attention to detail makes the **RAPTORBAC** a **highly efficient** and **easy-to-use** unit. **Graphic technology** makes it easy to monitor compressor performance, and our **advanced design** maintains the ideal operating environment for **enhanced safety**.



TalonBAC

The **TALONBAC** is specifically designed for a working pressure of 6000 PSIG. It includes all of the features of the **RAPTORBAC**, with **additional standard safety features**, as well as **increased performance capability** in the available 15-hp and 20-hp models.



Integral Top Discharge Extractor



Model	CFM* (LPM)	HP	PSIG (BAR)	Weight Lbs. (kg)
RCA05B	6.0 (170)	5.0	5000 (345)	1150 (521.6)
RCA08D	8.3 (235)	7.5	5000 (345)	1195 (542.0)
RCA08E	8.0 (227)	7.5	6000 (414)	1230 (557.9)
RCA10F	14.0 (396)	10.0	6000 (414)	1235 (560.2)

DIMENSIONS: 66"H x 34.5"W x 32"D (max) (167.6 cm x 87.6 cm x 81.2 cm)

*Charging rate. Based on filling an 80 CF cylinder from ambient to the maximum working pressure shown

Model	CFM* (LPM)	HP	PSIG (BAR)	Weight Lbs. (kg)
T208E	8.0 (227)	7.5	6000 (414)	1485 (673.6)
T210F	14.0 (396)	10.0	6000 (414)	1490 (675.9)
T215G	21.0 (595)	15.0	6000 (414)	1595 (723.5)
T220G	24.0 (680)	20.0	6000 (414)	1615 (732.6)

DIMENSIONS: 71"H x 34.5"W x 36"D (max) (108.4 cm x 87.7 cm x 91.5 cm)

*Charging rate. Based on filling an 80 CF cylinder from ambient to the maximum working pressure shown



SAFESTATIONS



SafeStationx2



SafeStationx3



SafeStationx4

SafeStations

SafeStations combine unsurpassed performance with the flexibility to create customized solutions. Our trusted fill station design offers advanced technology and state-of-the-art safety features like our three-layer containment protection cabinet, with configurations to meet every need.



SafeStationx2

The **SafeStationx2** features sleek design and a two-cylinder fill station.

SafeStationx3

The **SafeStationx3** is designed to fill three SCBA/SCUBA cylinders simultaneously or separately.

SafeStationx4

The **SafeStationx4** offers maximum performance and efficiency, with a four-cylinder fill station and the versatility to fill two cylinders while loading or unloading two others, eliminating downtime between fills.



Exclusive regulator design that prevents unintentional adjustment in compliance with NFPA 1901, 2009 Edition



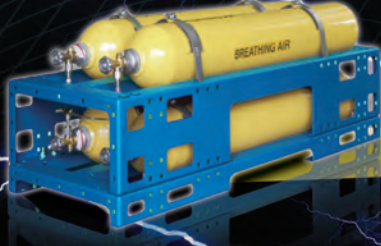
Unique AirLock access door, "click door handle down to open, click door handle up to close"

Model	Height	Width	Depth	Weight
SSX2	66" (167.6 cm)	25.75" (65.4 cm)	29.5" (74.9 cm)	935 lbs. (424.1 kg)
SSX3	71" (180.3 cm)	34.5" (87.6 cm)	36" (91.4 cm)	1400 lbs. (635 kg)
SSX4	71" (180.3 cm)	35.75" (90.8 cm)	29.75" (75.6 cm)	1850 lbs. (839.1 kg)



Systems and Documentation Fully Compliant with NFPA 1901, 2009 Edition

ASME & ISO Air Storage Systems



RANGER Series Breathing Air Compressors



Ranger Compressors

Ranger air compressors deliver our proven performance in a full range of configurations to meet customers' precise specifications. Ranger's multi-stage reciprocating compressors have a capacity range from 6 to 24 CFM and can be **customized with an array of driver combinations, including electric or hydraulic motors or diesel engines.** Units can be configured vertically or horizontally and also can be modified for mobile or special use.

Model	CFM* (LPM)	HP	PSIG (BAR)	Weight Lbs. (kg)
RA05B	6.0 (170)	5.0	5000 (345)	1150 (521.6)
RA08D	8.0 (227)	7.5	5000 (345)	1195 (542.0)
RA08E	8.0 (227)	7.5	6000 (414)	1485 (673.6)
RA10F	14.0 (396)	10.0	6000 (414)	1490 (675.9)
RA15G	21.0 (595)	15.0	6000 (414)	1595 (723.5)
RA20G	24.0 (680)	20.0	6000 (414)	1695 (768.8)

Weight & dimension may vary per application
 *Charging rate. Based on filling an 80 CF cylinder from ambient to the maximum working pressure shown

Air Storage Systems

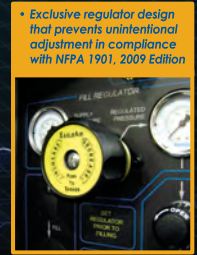
Our air storage systems demonstrate our **commitment to safety, reliability and customer service.** All systems are **ASME and ISO compliant** and are **designed to meet customers' unique needs.** Racks designed to protect the valves in compliance with NFPA 1901 are available.

Air Control Panels

Air control panels are the nerve center of any breathing air system, and ours are **designed with our exacting standards to maximize the efficiency and safety** of all breathing air systems.



At Eagle Compressors, Inc, our highly experienced engineers utilize the latest-technology, computer aided design tools to deliver the most flexible and innovative mobile breathing air system solutions to exacting end user requirements. For new or retrofit vehicles, from concept to final on-time delivery, customers can rely on our continuous technical assistance committed to design and manufacture of systems that exceed all expectations.



Mobile Fill Station

ACP Control Panels

Mobile Containment Fill Stations

With the most **advanced operator safety** and **user-friendly technology**, EagleAir® mobile fill stations are designed to **meet and exceed customer expectations**. Carefully designed features **minimize operator fatigue** and allow our mobile units to blend seamlessly with existing equipment.

Weights and Dimensions of Mobile Fill Stations (without control panels)

Model	Height	Width	Depth	Weight
CSSX2 (vertical)	38" (96.6 cm)	16.5" (42 cm)	25" (63.5 cm)	700 lbs. (317.5 kg)
CSSX2 (horizontal)	16.5" (42 cm)	38" (96.6 cm)	25" (63.5 cm)	700 lbs. (317.5 kg)
SWX2	33" (83.8 cm)	25" (63.5 cm)	23" (58.4 cm)	650 lbs. (294.8 kg)

Centurion SafeStationx2

Two-position design (vertical or horizontal) format allows filling two (2) **SCBA/SCUBA** cylinders simultaneously or separately. It includes our **unique AirLock access door design** that offers complete stress-free operation, even during extended periods of filling. This model requires a minimal amount of compartment space and is available with up to 4-bank integral cascade control panels.

SideWinderx2

Two-position fill station designed for filling SCBA cylinders only. This space-saving configuration includes our "slide & pull" access door design for maximum operator comfort. These units are available with up to 6-bank integral cascade control panels.





AIRQUESTSMT™



Complete air system components are enclosed and protected from the elements



Swing-up access door designed to provide operator shelter from the elements



AirQuestSMT™

Complete, factory-assembled and tested breathing air system on a highway-ready trailer for refilling breathing air cylinders at, or strategically near, the incident site.

When mobility and versatility are critical, **AirQuestSMT™** offers a singular solution. Our complete SCBA/SCUBA cylinder fill station includes compressors from 14 to 24 CFM and a customizable air storage system. The **GenSet power design** offers the flexibility to operate the system in the field or from a central location wired to a fixed power grid.

AirQuestSMT™ Trailer-Mounted Breathing Air System features include:

- **Complete, mobile SCBA/SCUBA cylinder refill system** including the compressor in capacities ranging from 14 to 24 CFM, containment fill station and choice of air storage system.
- **Slide-out air flow and compressor control panel design** simplifies service access to all indicators and plumbing.
- **AirLock design** of fill station access door minimizes operator fatigue when loading and unloading cylinders.
- **Single point, illuminated operating control center** located at the rear of the trailer for maximum simplicity and operator safety.

Model	CFM*	HP	PSIG	Weight	Dimensions
AQ10F	14.0	10.0	6000	Approx. 7800 lbs.	80"H x 87"W x 157"L
AQ15G	21.0	15.0	6000	Approx. 7800 lbs.	80"H x 87"W x 157"L
AQ20G	24.0	20.0	6000	Approx. 7800 lbs.	80"H x 87"W x 157"L

*Charging rate. Based on filling an 80 CF cylinder from 0 - 6000 PSI.



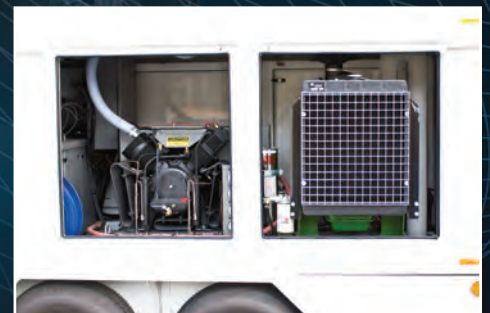


TRAILER MOUNTED BREATHING AIR SYSTEMS

Meets or exceeds NFPA 1901, 2009
Revision specifications



Aluminum body and frame construction





ACCESSORIES

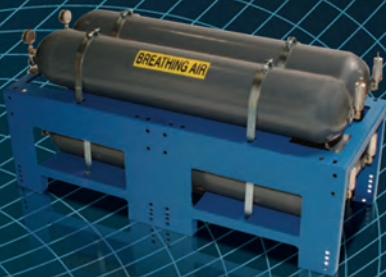


Purifiers

The same advanced purification system that is included on all of our compressor systems is also available as a **wall-mounted system**. Our **fail-safe design** inhibits filling if any disposable cartridge is not installed.

AirMonitors

Our three air monitors ensure that customers' breathing air meets **worldwide safety standards**. Choose a CO monitor, an H₂O monitor or our proprietary AirMonitor, which monitors both. **All feature digital readout panels with live measurements.**



AirStorage

Our air storage systems offer the flexibility to meet customer needs. **ASME and ISO systems are available piped in bulk or to work in conjunction with a cascade control panel.**

AirReel

The **AirReel** product line includes **five self-retracting reel models** with 50 or 100-foot capacities. Our **unique tech-ribbon design** allows the units to be **mounted to floors, walls or ceilings**, and **user-friendly, graphic technology air flow control panels** are recessed to prevent accidental damage or resetting.

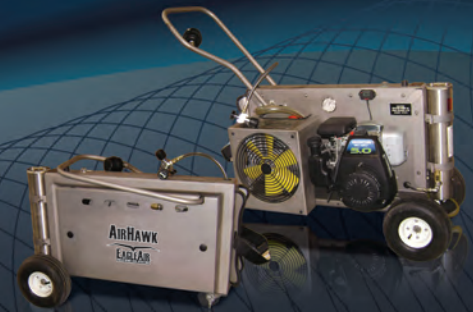


RACMROLL

RACMROLL is a mobile storage cart for up to 16 SCBA/SCUBA cylinders. With a **zero turning radius**, **lock-down mode for safe loading and unloading** and **lightweight aluminum construction**, **RACMROLL** is a **safe and user-friendly solution for storing and transporting breathing air cylinders.**

AirHawk

The **AirHawk portable breathing air compressor** is designed to keep cylinders charged when in a confined space environment. The rugged design features a **portable gasoline engine**, **automatic stop control** and **final safety relief valve.**



Custom Accessories

- Remote Compressor Monitoring Panels
- Remote Compressor Control Panels
- Air Control Panels



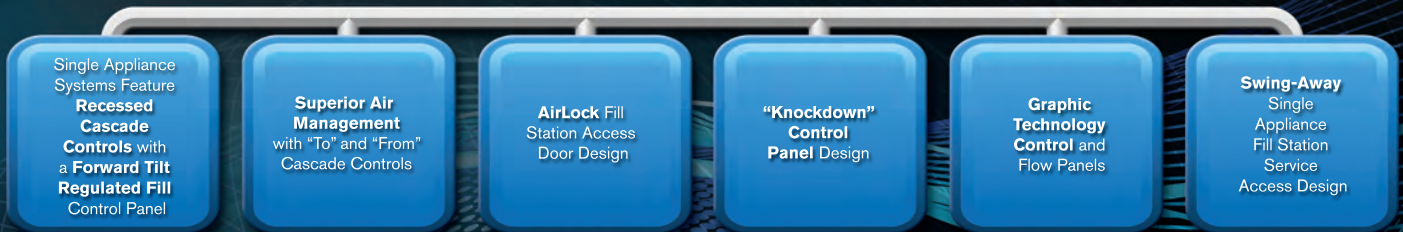
Our Company. Our Commitment.

Eagle Compressors is proud of our longstanding commitment to safety and innovation. In business since 1973, the Company has a well known track record of innovations that have become industry standards and have improved firefighter safety. The development of **Containment Design fill stations** and **Single-Appliance breathing air systems** are key examples of these innovations. **For more than 35 years** we have manufactured breathing air systems that **meet and exceed the highest industry standards**. As an American and veteran-owned company, we understand the needs of our armed forces, firefighters, first responders and other customers, and we are dedicated to providing them with the most **advanced, most reliable equipment possible**.

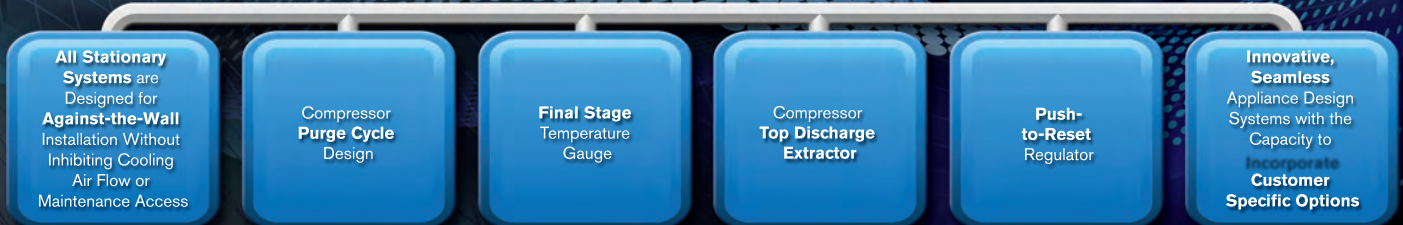
Our commitment starts with an active membership in the **Fire Apparatus Manufacturers Association (FAMA)**. We are also an active company in **National Fire Protection Association (NFPA)** committees to set standards that assure firefighter safety, so we remain aware and **help drive the latest safety standards**. It continues with a **manufacturing strategy** that **assures traceability and consistency in all of our products**. And it evolves with a **reputation for continuous improvement** that results in **innovation across all product lines**.

All Eagle products have unique, technically advanced features that set us apart in the industry

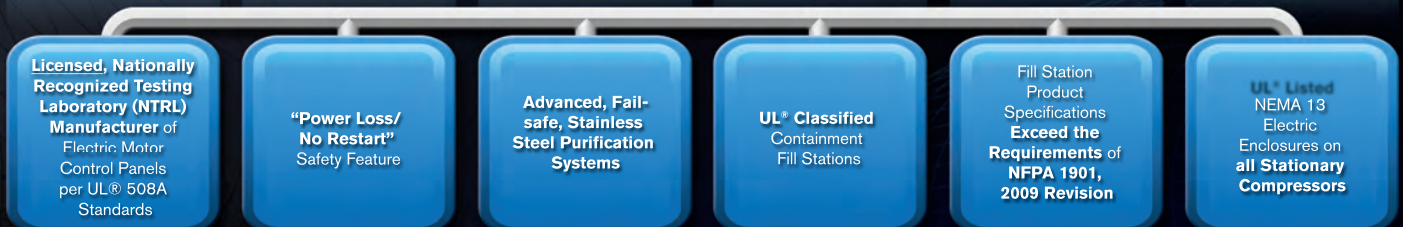
User-Friendly Features



Design Innovation Features



Safety Features & Certifications



Eagle Compressors, Inc. manufactures high pressure breathing air systems for recharging SCBA and SCUBA cylinders. We are proud of the essential service we provide to first responders and those serving in defense of our nation worldwide.

We are committed to a loyalty based national distributor network that includes only top-quality businesses with the necessary assets to serve their regional markets.

Our Company is committed to a continuous improvement philosophy that drives product and service development above and beyond your expectations. Firefighters, commercial and recreational divers, our armed forces, and people who operate in hazardous environments can expect products with uncompromising reliability, best-in-class design and user-friendly features. Our products are backed by a commitment—100% customer service satisfaction.



3003 Thurston Ave., Greensboro, NC 27406
P: (336) 398-8000 F: (336) 398-8001
www.eaglecompressors.com

We would be privileged to assist in selecting the breathing air system that meets your exact needs. Call today.